

EST 1989

# BILL'S FARM

- FOODSERVICE -



## Product List 2019

UNIT 18 10 CAWLEY ROAD, YARRAVILLE VIC 3013

P 03 9687 4011 | E SALES@BILLSFARMFOODSERVICE.COM.AU

[BILLSFARMFOODSERVICE.COM.AU](http://BILLSFARMFOODSERVICE.COM.AU)



<b>DELIVERY POLICY</b>	<b>04</b>
<b>FRESH CHEESE, CURD AND RICOTTA</b>	<b>05</b>
<b>MOZZARELLA CHEESE AND STRETCHED CURD</b>	<b>05</b>
<b>FETA CHEESE</b>	<b>06</b>
<b>WHITE MOULD CHEESE</b>	<b>06</b>
<b>WASHED RIND CHEESE</b>	<b>07</b>
<b>BLUE CHEESE</b>	<b>07</b>
<b>SEMI-HARD CHEESE</b>	<b>08</b>
<b>CHEDDAR CHEESE</b>	<b>09</b>
<b>HARD CHEESE</b>	<b>10</b>
<b>VEGAN CHEESE</b>	<b>10</b>
<b>YOGHURT</b>	<b>11</b>
<b>BUTTER</b>	<b>11</b>
<b>CRÈME FRAÎCHE</b>	<b>11</b>
<b>CREAM AND MASCARPONE</b>	<b>11</b>
<b>ACCOMPANIMENTS AND MISCELLANEOUS</b>	<b>12</b>
<b>ANTIPASTO, TAPENADE, OLIVES AND OLIVE OIL</b>	<b>14</b>
<b>MEAT</b>	<b>16</b>
<b>FISH</b>	<b>19</b>

**We specialise in  
servicing our customers  
with food products from  
Australia and all around  
the world.**



# Delivery Policy

## 01

WE PREFER ORDERS TO  
BE EMAILED TO

**SALES@BILLSFARMFOODSERVICE.COM.AU**

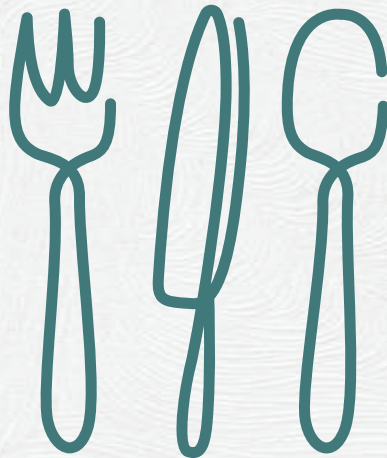
OR FAXED TO 9689 2160

IF YOU WISH TO PLACE A PHONE ORDER  
PLEASE CALL 03 9687 4011

## 02

FIRST FOUR (4) WEEKS OF TRADING IS COD  
THEREAFTER SEVEN (7) DAY CREDIT TERMS ARE OFFERED.

IT MAY BE NECESSARY TO DELIVER ON A COD BASIS  
SHOULD AN ACCOUNT FALL OUTSIDE THE SEVEN (7) DAY  
CREDIT TERMS OFFERED.



## FRESH CHEESE, CURD AND RICOTTA

	UNIT	APPROX SIZE	ORIGIN
<b>COWS MILK</b>			
THAT'S AMORE RICOTTA WHOLE	EACH	3KG	AUSTRALIA
THAT'S AMORE RICOTTA WHOLE SMALL	EACH	1KG	AUSTRALIA
HALOUMI APHRODITE (SHEEP AND GOATS)	EACH	225G	CYPRUS
HALOUMI PITTAS (COWS, SHEEP AND GOATS)	EACH	250G PIECE	CYPRUS
HALOUMI (COWS)	EACH	2KG BUCKET	AUSTRALIA
NEUFCHATEL (CREAM CHEESE)	EACH	2KG LOG	AUSTRALIA
<b>SHEEP MILK</b>			
RICOTTA SALATA (ITALIAN)	EACH	3KG	SARDINIA
MYZITHRA (RICOTTA SALATA GREECE)	EACH	800G BALL	GREECE
<b>GOATS MILK</b>			
SOIGNON FRENCH CHEVRE	EACH	1KG	FRANCE
VICTORIAN CHEVRE	EACH	1KG	AUSTRALIA
SPANISH CHEVRE	EACH	1KG	SPAIN
GOATS CURD	EACH	1.2KG	AUSTRALIA

## MOZZARELLA CHEESE AND STRETCHED CURD

	UNIT	APPROX SIZE	ORIGIN
<b>COWS MILK</b>			
THAT'S AMORE BOCCONCINI	EACH	1KG BUCKET	AUSTRALIA
THAT'S AMORE BABY BOCCONCINI	EACH	1.5KG BUCKET	AUSTRALIA
THAT'S AMORE BURATTA	EACH	125G	AUSTRALIA
THAT'S AMORE FIORE DI BURATTA	EACH	1KG BUCKET	AUSTRALIA
THAT'S AMORE FIORI DI LATTE	EACH	1KG BUCKET	AUSTRALIA
THAT'S AMORE SCAMORZA BIANCA	EACH	1KG LOG	AUSTRALIA
THAT'S AMORE SCAMORZA SMOKED	EACH	1KG LOG	AUSTRALIA
THAT'S AMORE CACCIOTA (VARIOUS) – PLAIN; PEPPER; CHILLI	EACH	300G	AUSTRALIA
THAT'S AMORE CACCIOTA TRUFFLE	EACH	300G	AUSTRALIA
LA PIZZARELLA	EACH	1.4KG LOG	AUSTRALIA
MOZZARELLA SHREDDED	EACH	2KG BAG	AUSTRALIA
<b>BUFFALO MILK</b>			
THAT'S AMORE BUFFALO CACCIOTA	EACH	300G-400G	AUSTRALIA
THAT'S AMORE BUFFALO MOZZARELLA	EACH	1KG BUCKET	AUSTRALIA

## FETA CHEESE

	UNIT	APPROX SIZE	ORIGIN
<b>COWS MILK</b>			
AUSTRALIAN GREEK STYLE	EACH	2KG BUCKET	AUSTRALIA
DANISH	EACH	16KG TIN	DENMARK
YARRA VALLEY PERSIAN FETA	EACH	275G JAR	YARRA VALLEY
YARRA VALLEY PERSIAN FETA	EACH	3KG BUCKET	YARRA VALLEY
<b>SHEEP MILK</b>			
BULGARIAN SHEEP	EACH	900G TUB	BULGARIA
<b>GOATS MILK</b>			
BULGARIAN GOATS	EACH	900G TUB	BULGARIA
GREEK DODONI LOOSE (SHEEP AND GOATS)	EACH	1.6KG BLOCK	GREECE

## WHITE MOULD CHEESE

	UNIT	APPROX SIZE	ORIGIN
<b>COWS MILK</b>			
GIPPSLAND BRIE	EACH	1KG WHOLE	VICTORIA
BLACK LABEL BRIE KING ISLAND	EACH	1KG WHOLE	KING ISLAND
SEAL BAY TRIPLE CREAM KING ISLAND	EACH	1KG LOG	KING ISLAND
CAPE WICKHAM DOUBLE BRIE KING ISLAND	EACH	1KG	KING ISLAND
KING ISLAND FURNEAUX DOUBLE CREAM	EACH	1.2KG	KING ISLAND
MILAWA CAMEMBERT	EACH	150G	VICTORIA
MILAWA BRIE	EACH	500G	VICTORIA
MAFFRA BRIE	EACH	1KG	VICTORIA
KINGFISHER DOUBLE CREAM BRIE	EACH	1KG	SOUTH AUSTRALIA
TASMANIA FOODSERVICE BRIE	EACH	1KG	TASMANIA
WOODSIDE CHARLESTON	EACH	500G	SOUTH AUSTRALIA
WOODSIDE CHARLESTON SMALL	EACH	110G	SOUTH AUSTRALIA
<b>GOATS MILK</b>			
MILAWA GOATS CAMEMBERT	EACH	150G	VICTORIA

## WASHED RIND CHEESE

	UNIT	APPROX SIZE	ORIGIN
<b>COWS MILK</b>			
MILAWA KING RIVER GOLD	EACH	150G ROUND	VICTORIA
MILAWA KING RIVER GOLD	EACH	600G LOG	VICTORIA
BERRY'S CREEK SPRING PLAINS	EACH	1KG	VICTORIA
TASMANIA HERITAGE RED SQUARE	EACH	1KG	TASMANIA
KING ISLAND STORMY	EACH	500G	KING ISLAND
JENSON'S RED	EACH	1.2KG	VICTORIA
<b>GOATS MILK</b>			
WOODSIDE VIGNERON (WRAPPED IN VINE LEAVES)	EACH	110G	SOUTH AUSTRALIA
QUESO VIEJO MAESTRO	EACH	400G	SPAIN
<b>BUFFALO MILK</b>			
BERRY'S CREEK SUNRISE PLAINS	EACH	1KG	VICTORIA

## BLUE CHEESE

	UNIT	APPROX SIZE	ORIGIN
<b>COWS MILK</b>			
FOURME D'AMBERT	EACH	2KG WHOLE	FRANCE
DANISH BLUE	EACH	3KG WHOLE	DENMARK
VALDEON (COWS AND GOATS)	EACH	3KG	SPAIN
LARA AND SARA	EACH	1.6KG	SPAIN
GORGONZOLA DOLCE	EACH	1.5KG WEDGE	ITALY
GORGONZOLA DOLCE AND PICANTE D.O.P	KG	1.5KG CUT MIN.	ITALY
ROARING FORTIES	EACH	1KG	KING ISLAND
MILAWA BLUE	EACH	600G	VICTORIA
TARAGO RIVER SHADOWS OF BLUE	KG	1/4, 1/2 OR 2KG WHOLE	VICTORIA
BERRY'S CREEK MOSSVALE BLUE	KG	1/4, 1/2 OR 3KG WHOLE	VICTORIA
BERRY'S CREEK TARWIN BLUE	KG	1/4, 1/2 OR 3KG WHOLE	VICTORIA
BERRY'S CREEK OAK BLUE	KG	1/4 CUT MIN., 4.5KG WHOLE	VICTORIA
<b>GOATS MILK</b>			
MILAWA MT BUFFALO BLUE	EACH	1.5KG	VICTORIA
VALDEON (COWS AND GOATS)	EACH	3KG	SPAIN
<b>BUFFALO MILK</b>			
RIVERINE BLUE	KG	1/4, 1/2 OR 3KG WHOLE	VICTORIA

## SEMI-HARD CHEESE

	UNIT	APPROX SIZE	ORIGIN
<b>COWS MILK</b>			
ASAGIO MATURE	EACH	2.5KG	ITALY
FONTINA ITALIAN RAW MILK	KG	1KG CUT MIN.	ITALY
FONTINA DANISH	KG	1KG CUT MIN.	DENMARK
JARLSBERG	KG	1KG CUT MIN.	NORWAY
CANTAL JEUNE	KG	1KG CUT MIN.	FRANCE
MASDAAM WHEEL	KG	1KG CUT MIN.	NETHERLANDS
MASDAAM SLICED	KG	PER KG	NETHERLANDS
EMMENTAL	EACH	3KG	GERMANY
GOUDA BABY PLAIN AND CARRAWAY SEED (ALEXANDRINA)	EACH	250G	SOUTH AUSTRALIA
PECORINO PEPATO JAMES FLAT (ALEXANDRINA) (SPECIAL ORDER REQUIRED)	KG	KG WEDGE	SOUTH AUSTRALIA
MAHON SEMI-CURED D.O.P	EACH	3.2KG	SPAIN
SAN SIMON D.O.P (SPANISH SMOKED)	EACH	1KG PYRAMID	SPAIN
MANCHEGO-STYLE IBERICO 3/33 (ONE THIRD COWS, SHEEP AND GOATS)	KG	1/2 OR 3KG WHOLE	SPAIN
RACLETTE BEELER AGED	KG	1/4 CUT MIN., 5KG WHOLE	SWITZERLAND
RACLETTE HEIDI	KG	1/4 OR 5KG WHOLE	TASMANIA
TILSIT HEIDI	KG	1/4 OR 5KG WHOLE	TASMANIA
WYFE OF BATH	KG	1/2 OR WHOLE	UK
<b>SHEEP MILK</b>			
KEFALOGRAVIERA (KEFI)	KG	1.2KG CUT MIN.	GREECE
MANOURI (COWS AND SHEEP)	EACH	2KG LOG	GREECE
PATA DE MULO (RAW SPANISH SHEEP MILK)	EACH	2.8KG	SPAIN
<b>GOATS MILK</b>			
QUESO DE CABRA	KG	1/2 OR 3KG WHOLE	SPAIN
MURCIA AL VINO D.O.P (WASHED IN RED WINE)	EACH	2.5KG	SPAIN



## CHEDDAR CHEESE

	UNIT	APPROX SIZE	ORIGIN
<b>COWS MILK</b>			
QUICKES ENGLISH SELECTED	KG	CUT PER KG	UK
ASHGROVE BLACK WAX	KG	1/2 OR 4.5KG WHOLE	TASMANIA
ALEXANDRINA VINTAGE BLACK WAX	KG	1/4 OR 5KG WHOLE	SOUTH AUSTRALIA
KING ISLAND BLACK WAX	KG	1/4 OR 5KG WHOLE	KING ISLAND
KING ISLAND SURPRISE BAY RED WAX	KG	1/4 OR 3KG WHOLE	KING ISLAND
KING ISLAND STOKES POINT SMOKED	KG	1/4 OR 3KG WHOLE	KING ISLAND
AMERICAN RED	EACH	1.81KG	USA
AMERICAN RED SLICES	EACH	900G	USA
MONTEREY JACK	EACH	1.81KG	USA
MAFFRA CLOTH MATURED	EACH	2KG	VICTORIA
MAFFRA RED WAX DISK	EACH	2.5KG WHOLE	VICTORIA
MAFFRA RED WAX BLOCK	EACH	1.1KG	VICTORIA
TASTY BLOCK	EACH	1.8KG	AUSTRALIA
TASTY MILD BLOCK	EACH	1.8KG	AUSTRALIA
TASTY VINTAGE BLOCK	EACH	1.8KG	AUSTRALIA
WATSONIA AND WARNAMBOOL SELECTED FARMHOUSE	EACH	1KG WHOLE	VICTORIA

## HARD CHEESE

	UNIT	APPROX SIZE	ORIGIN
<b>COWS MILK</b>			
GRANA PADANO 18 MTH FIRST GRADE	KG	CUT PER KG	ITALY
GRANA PADANO 18 MTH FIRST GRADE GRATED	KG	PER KG	ITALY
COMTE 18 MTH <b>UNPASTEURISED</b>	KG	CUT PER KG	FRANCE
COMTE 10 MTH <b>UNPASTEURISED</b>	KG	CUT PER KG	FRANCE
GRUYERE BEELER 18 MTH RAW MILK	EACH	2KG WEDGE	SWITZERLAND
GRUYERE SWISS AGED	KG	CUT PER KG	SWITZERLAND
GRUYERE HEIDI FARM	KG	CUT PER KG	TASMANIA
TETE DE MOINE (GIROLLE AVAILABLE FOR MAKING FLORETTES)	EACH	800G	SWITZERLAND
MAHON ARTISAN (RAW COWS MILK WITH INTENSE FLAVOUR)	EACH	2KG	SPAIN
MAHON SEMI-CURED	EACH	3KG	SPAIN
AUSTRALIAN PARMESAN MILLEL	EACH	10KG	AUSTRALIA
PECORINO MILLEL	EACH	6KG	AUSTRALIA
PECORINO PEPATO	EACH	6KG	SOUTH AUSTRALIA
<b>SHEEP MILK</b>			
PECORINO TOSCANO	EACH	2KG	ITALY
MANCHEGO 12 MTH ARTISAN	KG	1/2 OR 3KG WHOLE	SPAIN
<b>COATS MILK</b>			
QUESO IBORES NATURAL OR PAPRIKA	EACH	800G-1KG	SPAIN
WOODSIDE FIGARO (WRAPPED IN VINE LEAVES)	EACH	1KG	SOUTH AUSTRALIA

## VEGAN CHEESE

	UNIT	APPROX SIZE	ORIGIN
VEGAN CHEDDAR BLOCK	EACH	2.5KG	GREECE
VEGAN PIZZA TOPPING BLOCK	EACH	2.5KG	GREECE
VEGAN CHEDDAR BLOCK	EACH	200G	GREECE
VEGAN MOZZARELLA BLOCK	EACH	200G	GREECE
VEGAN CHEDDAR SLICED	EACH	150G	GREECE

---

## YOGHURT

---

	UNIT	APPROX SIZE	ORIGIN
<b>COWS MILK</b>			
THICK GREEK COUNTRY STRAINED	EACH	1KG	VICTORIA
THICK GREEK COUNTRY STRAINED	EACH	5KG	VICTORIA
YOGHURT NATURAL SET	EACH	10KG	VICTORIA

---

## BUTTER

---

	UNIT	APPROX SIZE	ORIGIN
<b>COWS MILK</b>			
UNSALTED WARNAMBOOL	EACH	15KG	VICTORIA
UNSALTED MURRAY GOULBURN	EACH	25KG	VICTORIA
UNSALTED	KG	1KG CUT MIN.	AUSTRALIA
PEPE SAYA ROUNDS SALTED OR UNSALTED	EACH	225G	AUSTRALIA
PEPE SAYA PORTIONS	EACH	15G X 100	AUSTRALIA
<b>BUTTERMILK</b>			
ST DAVID DAIRY BUTTERMILK	EACH	2L	AUSTRALIA
ST DAVID DAIRY BUTTERMILK	EACH	15L	AUSTRALIA

---

## CRÈME FRAÎCHE

---

	UNIT	APPROX SIZE	ORIGIN
<b>COWS MILK</b>			
ALEXANDRINA PURE JERSEY CRÈME FRAÎCHE	EACH	500ML	SOUTH AUSTRALIA
ST DAVID DAIRY CRÈME FRAÎCHE	EACH	1KG	VICTORIA

---

## CREAM AND MASCARPONE

---

	UNIT	APPROX SIZE	ORIGIN
<b>COWS MILK</b>			
MEANDER VALLEY CLOTTED CREAM (TWO DAYS LEAD TIME REQUIRED)	EACH	600ML	TASMANIA
THICKENED CREAM	EACH	5L	VICTORIA
CREAM CHEESE	EACH	2KG LOG	AUSTRALIA
DAIRY FARMERS SOUR CREAM	EACH	2L	AUSTRALIA
<b>MASCARPONE</b>			
THAT'S AMORE MASCARPONE	EACH	500G	VICTORIA
MASCARPONE	EACH	500G	ITALY
MASCARPONE	EACH	1KG	VICTORIA

## ACCOMPANIMENTS AND MISCELLANEOUS

	UNIT	APPROX SIZE	ORIGIN
QUINCE PASTE	EACH	5KG TIN	SPAIN
QUINCE PASTE	KG	500G CUT MIN.	SPAIN
QUINCE PASTE SANTA TERESA	EACH	150G	SPAIN
QUINCE PASTE SANTA TERESA	EACH	1.4KG	SPAIN
ROLADA (VARIOUS) – FIG AND WALNUT; PRUNE AND WALNUT	EACH	150G	AUSTRALIA
SOUTH CAPE CRISP BREAD	EACH	100G	AUSTRALIA
FALWASSER CRISP BREAD (VARIOUS) – NATURAL; SESAME	EACH	150G	AUSTRALIA
FALWASSER CRISP BREAD GLUTEN FREE (VARIOUS) – NATURAL; ROSEMARY AND SEA SALT; CHARCOAL	EACH	120G	AUSTRALIA
LAVOSH SNACK SIZE	EACH	150G	AUSTRALIA
LAVOSH BITE SIZE	EACH	250G	AUSTRALIA
LAVOSH THINS WHOLEMEAL	EACH	250G	AUSTRALIA
CAPER BERRIES	EACH	3.2KG	SPAIN
CORNICHONS TOP GRADE	EACH	2.5KG	INDIA
HARISSA PASTE	EACH	1KG	AUSTRALIA
IRANIAN FIGS	KG	500G MIN.	IRAN
COUSCOUS GIANT MOGHRABIEH	EACH	900G	LEBANON
PIQUILLO PEPPERS	EACH	290G	SPAIN
MUSCATELS	EACH	4KG BOX	AUSTRALIA
ROSE WATER	EACH	300ML	LEBANON
POMEGRANATE MOLASSES	EACH	250ML	LEBANON
POMEGRANATE MOLASSES	EACH	5L	LEBANON
MALDEN SEA SALT	EACH	240G	UK
MURRAY RIVER SALT	EACH	250G	AUSTRALIA
BLACK TRUFFLE OIL	EACH	250ML	ITALY
WHITE TRUFFLE OIL	EACH	250ML	ITALY

## ACCOMPANIMENTS AND MISCELLANEOUS CONT.

	UNIT	APPROX SIZE	ORIGIN
<b>VINEGAR</b>			
SPANISH SHERRY D.O.P	EACH	375ML	SPAIN
SPANISH SHERRY D.O.P	EACH	750ML	SPAIN
REISLING AGRODULCE VINEGAR	EACH	500ML	ITALY
APPLE CIDER VINEGAR	EACH	5L	FRANCE
CHAMPAGNE VINEGAR	EACH	5L	FRANCE
WHITE WINE VINEGAR	EACH	5L	FRANCE
RED WINE VINEGAR	EACH	5L	FRANCE
<b>MUSTARD</b>			
DIJON MUSTARD	EACH	5KG	FRANCE
WHOLEGRAIN MUSTARD	EACH	5KG	FRANCE
GREEN PEPPERCORN MUSTARD	EACH	190G	FRANCE
<b>PAPRIKA</b>			
PIMENTON EL ANGEL (VARIOUS) — SMOKED; SPICED; SWEET	EACH	75G TIN	SPAIN
PIMENTON EL ANGEL (VARIOUS) — SMOKED; SPICED; SWEET	EACH	1KG	SPAIN
<b>SAFINTER (FINEST SPANISH SAFFRON)</b>			
SAFFRON CRISTAL	EACH	1G JAR	SPAIN
SAFFRON LITHO	EACH	10G TIN	SPAIN

## ANTIPASTO, TAPENADE, OLIVES AND OLIVE OIL

	UNIT	APPROX SIZE	ORIGIN
<b>ANTIPASTO</b>			
SEMI-DRIED TOMATO (BAMBOLEO)	EACH	2KG TRAY	
SEMI-DRIED TOMATO (3C)	EACH	2KG BUCKET	
SUN-DRIED TOMATO STRIPS NEVIA	EACH	2KG BUCKET	
BELL PEPPERS STUFFED	EACH	1KG TRAY	
MUSHROOMS MARINATED	EACH	2.5KG TRAY	
EGGPLANT ROASTED	EACH	2.5KG TRAY	
PEPPERS FLAME GRILLED	EACH	2KG BUCKET	
CAPSICUM ROASTED	EACH	2.5KG TIN	
ARTICHOKES GRILLED	EACH	2.5KG TRAY	
<b>TAPENADE</b>			
<b>PESTO (VARIOUS)</b>			
– TRADITIONAL BASIL (BAMBOLEO); SUN-DRIED TOMATO	EACH	2KG BUCKET	
<b>DIP (VARIOUS)</b>			
– HOMMUS; TZATZIKI; TARAMA; SPICY HOMMUS; EGGPLANT; SPICY CAPSICUM; SPINICH; BEETROOT; SMOKED SALMON; SMOKED TROUT; SMOKED EGGPLANT	EACH	2.3KG BUCKET	
<b>OLIVES</b>			
BLONDE	EACH	7KG BUCKET	AUSTRALIA
SPANISH QUEEN GREEN LARGE	EACH	5KG BUCKET	AUSTRALIA
GREEN SMALL	EACH	7KG BUCKET	AUSTRALIA
GREEN STUFFED (VARIOUS)			
– PESTO; SUN-DRIED TOMATO; FETA; ANCHOVY	EACH	2KG BUCKET	AUSTRALIA
KALAMATA	EACH	7KG BUCKET	AUSTRALIA
KALAMATA PITTED	KG	KG BUCKET	AUSTRALIA
LIGURIAN-STYLE WILD	EACH	7KG BUCKET	AUSTRALIA
MANZANELLO	EACH	7KG BUCKET	AUSTRALIA
MANZANELLO PITTED	EACH	6KG BUCKET	AUSTRALIA
MIXED	EACH	7KG BUCKET	AUSTRALIA
GREEK GREEN SPLIT	EACH	8KG BUCKET	AUSTRALIA
SICILIAN GREEN	EACH	5KG BUCKET	AUSTRALIA

— ANTIPASTO, TAPENADE, OLIVES AND OLIVE OIL CONT. —

<b>OLIVE OIL</b>	<b>UNIT</b>	<b>APPROX SIZE</b>	<b>ORIGIN</b>
EXTRA VIRGIN OLIVE OIL	EACH	350ML BOTTLE	AUSTRALIA
EXTRA VIRGIN OLIVE OIL	EACH	750ML BOTTLE	AUSTRALIA
EXTRA VIRGIN OLIVE OIL	EACH	20L CASK	AUSTRALIA
LYRAKIS (CRETAN EXTRA VIRGIN OLIVE OIL)	EACH	4L TIN	GREECE
COLOSSUS (BLEND EXTRA VIRGIN OLIVE OIL AND VEGETABLE OIL)	EACH	20L TIN	GREECE

---

## MEAT

---

	UNIT	APPROX SIZE	ORIGIN
<b>HAM</b>			
VIRGINIA HAM WHOLE (CASALINGO)		3KG	
VIRGINIA HAM SLICED (CASALINGO)		1KG	
GRANDMOTHER (BARKLY SMOKEHOUSE) (WINNER BEST AUSTRALIAN HAM)		2-2.5KG	
BOMBA (BARKLY SMOKEHOUSE)		2-2.5KG	
LUX (BARKLY SMOKEHOUSE)		1KG	
KASSLER (BARKLY SMOKEHOUSE)		1KG	
HAM HOCK (BARKLY SMOKEHOUSE)		1KG	
DOUBLE SMOKED HAM (BARKLY SMOKEHOUSE)		2-2.5KG	
GYPSY (BARKLY SMOKEHOUSE)		2-2.5KG	
<b>BACON</b>			
LONG RASHERS RIND ON SLICED		5KG BOX	
SHORT BACON RINDLESS WHOLE		KG	
STREAKY BACON SLICED (CASALINGO)		2.5KG	
EYE BACON SLICED (CASALINGO)		2.5KG	
SHORT CUT WHOLE (BARKLY SMOKEHOUSE)		2.5KG	
KAISERFLESCHE WHOLE BELLY (CASALINGO)		4KG	
BAROSSA BACON DOUBLE SMOKED RIND ON		2.5KG	
<b>BEEF</b>			
BRESAOLA (CASALINGO)		1.5KG	
WAGYU BRESAOLA (CASALINGO)		1.5KG	
CORNED BEEF WHOLE		1.2KG	
CORNED BEEF SLICED		1KG	
NY PASTRAMI BRISKET WHOLE (CASALINGO)		1.5KG	
NY PASTRAMI BRISKET SLICED (CASALINGO)		1KG	
PASTRAMI		1.5KG	



---

## MEAT CONT.

---

	UNIT	APPROX SIZE	ORIGIN
<b>PANCHETTA AND CURED MEATS</b>			
PANCHETTA ROUND		2.5KG	
PANCETTA (PUOPOLO)		2.5G	
FLAT PANCHETTA WHOLE (CASALINGO)		1.8KG	
FLAT PANCHETTA SLICED (CASALINGO)		1KG	
MORTADELLA (CASALINGO)		350G	
GUANCIALE (PUOPOLO)		350G	
GUANCIALE (CASALINGO)		600G	
CAPOCOLLO MILD OR HOT (PUOPOLO)		990G	
CAPOCOLLO MILD (CASALINGO)		1.1KG	
SPECK (PUOPOLO)		2KG	
<b>PROSCIUTTO AND JAMON</b>			
VICTORIA PROSCIUTTO HALF MOON		2KG	
VICTORIA PROSCIUTTO SLICED		KG	
ITALIAN 16-18MTH SAN DANIELE		5KG	
ITALIAN PARMA		5KG	
JAMON SERRANO GRAN RESERVA 18MTH LEG		5KG	
JAMON SERRANO 12MTH BLOCK		2KG	
JAMON SERRANO 18MTH LEG		2KG	
JAMON SERRANO 18MTH SLICED		500G	
JAMON IBERICO LEG PLATINUM FULL BELLOTTA		5KG	

## MEAT CONT.

	UNIT	APPROX SIZE	ORIGIN
<b>PÂTÉ, TERRINE AND RILLETTES</b>			
<b>PÂTÉ (VARIOUS)</b>			
– BLACK PEPPERCORN; BRANDY, PORT AND SAGE; CHICKEN LIVER; DUCK AND ORANGE; SALMON TROUT MOUSSE; WILD MUSHROOM		1KG	MELBOURNE
<b>TERRINE (VARIOUS)</b>			
– BURGUNDY HAM; CHICKEN AND TARRAGON; CHICKEN, FIG AND PISTACHIO; DUCK AND ROSEMARY EN CROUTE; DUCK AND ROSEMARY; DUCK, PISTACHIO, DATE AND BACON; PROVENÇAL TERRINE; RABBIT AND PRUNE; VENISON AND CEPES		1KG	MELBOURNE
<b>RILLETTES (VARIOUS)</b>			
– DUCK; PORK; RABBIT		1KG	MELBOURNE
<b>SALAMI, CURED SAUSAGES AND CHICKEN BREAST</b>			
ABRUZZESE SALAMI MILD OR HOT (CASALINGO)		1.5KG	
FELINO (PUOPOLO)		900G	
FELINO (CASALINGO)		600G	
MILANO (CASALINGO)		800G	
TRUFFLE SALAMI (CASALINGO)		800G	
CASALINGO LARGE (PUOPOLO)		2.6KG	
CASALINGO (PUOPOLO)		820G	
SOPRESSATA HOT LARGE (PUOPOLO)		2.6KG	
SOPRESSATA HOT (PUOPOLO)		820G	
HUNGARIAN CSABAI SMOKED (PUOPOLO)		820G	
CACCIATORE MILD OR HOT (PUOPOLO)		250G	
FINOCCHIONA (FENNEL) (PUOPOLO)		250G	
BOCCONCINI MILD OR HOT (PUOPOLO)		200G X 4	
WILD BOAR SALAMI (VECCHIET)		800G	
KANGAROO SALAMI (MARCHETTI)		400G	
CHORIZO ISTRAL MILD OR HOT		2KG	
CHORIZO CASA IBERICA FRESH		4.5KG	
MEDITERRANEAN LAMB (BARKLY SMOKEHOUSE)		2KG	
SMOKED CHICKEN BREAST (BARKLY SMOKEHOUSE)		350G	

---

## FISH

---

	UNIT	APPROX SIZE	ORIGIN
TASMANIAN A GRADE SMOKED SALMON	EACH	875G	TASMANIA
DARK FILLET ANCHOVIES	EACH	150G	ITALY
ANCHOVIES	EACH	600G JAR	ITALY
ITALIAN WHITE ANCHOVIES	EACH	1KG	ITALY
SMOKED TROUT WHOLE	EACH	250G	VICTORIA
SMOKED TROUT FILLET	EACH	120G	VICTORIA



[BILLSFARMFOODSERVICE.COM.AU](http://BILLSFARMFOODSERVICE.COM.AU)